



Northgate StruMap lets you create, view and query map-based data better and more cost-effectively than ever before. It's the powerful, flexible and user-friendly GIS toolset that you can use at your workplace, in the field, or on the Internet to maximise efficiency. It increases data accuracy, avoids constant manual checking, cuts overheads and works to your rules. You can spot trends, run 'what if' scenarios, and make business decisions with greater precision and less risk.

Northgate StruMap

Spatial data — faster, better, easier



With StruMap you can give your data new meaning and value by viewing it easily on a map. You can spot vital patterns, see previously unsuspected links, make better decisions, identify risks — and forestall them.

If you can bring location-based data to life by seeing it spatially, on a map, you can improve efficiency, decision-making — and customer service. And this is exactly what StruMap lets you do. It's vivid, accurate and formidably analytical. You can customise it to deliver solutions unique to you — and it's highly cost-effective.

Maximise your ROI in data

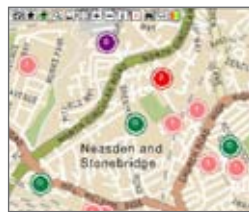
Your staff need no prior GIS experience, and very little training. And you'll maximise the return on investment in your data by seeing information in new ways for added business benefits. Your people will spot patterns that were previously hidden. They'll make connections that they couldn't before. Best of all, they'll be confident in what they do because StruMap is so precise. They'll know that what they see in StruMap is a true reflection of the real-world location.

StruMap is used by Ordnance Survey contractors, and a wide range of other organisations because it is so reliable. They use it to place asset and location data against background mapping for every kind of project that demands pinpoint accuracy.

What if?

And StruMap doesn't just let you view and analyse location-based data with precision. It's also especially good at tracing and identifying knock-on effects so that you can run 'what if' scenarios. It can highlight potential risks, too, and alert you to specific trends and events so that you can act to head off risks.

In short, it adds value to any listed data by putting it in a real-world context — and you can choose from several different modes of deploying StruMap so that you can use this capability in the way that's best for you...



StruMap will cut the cost, increase the efficiency and refine the accuracy of creating, viewing and querying map-based data.



Choose what's best

Choose the StruMap mode that suits you best, from desktop and mobile versions for individuals, enterprise-wide tools, and browser-based management information reporting tools.

StruMap Professional

This complete desktop version performs the most complex data analysis. It's configurable for different users, with add-ons for specific functions, like modeling or emergency planning. It can also pull information from the corporate GIS and work with it for advanced planning, without compromising the integrity of your central database.

StruMap Mobile

Mobile optimises resources, cuts travel costs and paperwork, and gives customers a better service. Staff can spend more time in the field because they have a direct link to the back office. They can view, capture and analyse location-based data on site, and send it into the back office with digital photographs and sketches. It maximises the value of your business data, as field staff can provide updates with no further re-keying. An offline option keeps work flowing even in poor reception areas.



DataNet

This enterprise version helps you cut costs through more efficient data management. It holds all your key location-based data centrally so you can give better customer service and produce regulatory reports more easily. It also keeps data current.

It maintains data integrity by a two-tier job approval process that checks and validates data before it is updated. You have an audit trail of every change. And you can also roll back to check data's historical position.

Spatial information management

This lets you view and query information from your databases on an annotated map, via a web browser. It's the ultimate cost-effective solution to map and manage information because it's web-based. It means your staff and customers can analyse and interrelate business data in a powerful new way without having to install anything on PCs.

Staff need no GIS knowledge to access and understand data graphically in real time. They can also be alerted to trends and events. And controls let you ensure that only the right people see the right information.



Better service, lower cost

Together, these four versions of StruMap offer you a rich suite of easy-to-implement GIS tools to transform efficiency and improve customer service at a lower cost.

And it's truly comprehensive. StruMap lets you display features intuitively and flexibly. You can associate external documents to map features. You can display aerial maps and digitise data. It will clean up your corporate GIS and identify data that's missing.

It will maintain data in connected networks, perform advanced spatial analysis, and conduct advanced tracing on connected network data. You can carry out location data analysis: reporting, scoring and trending by region. You can associate customer data, and perform multi-user corporate data updates.

It follows your rules

Crucially, StruMap can also be set up to follow your business rules to ensure immediate user familiarity and data security, and to enforce data lists, avoid manual entry and slash errors.

It is probably the most flexible GIS you can use.



'Your' StruMap

This flexibility also means you can truly have 'your' StruMap.

For example, StruMap can be customised to shorten your most commonly used functions and processes into a time-saving single function. You avoid multi-stop repetitive processes, increase efficiency, reduce the risk of errors and cut your costs.

Also, the user interface can be tiered for separate groups, such as: administrators, power users, editors and read-only groups. This can make the system even more user-friendly for non-technical users to give you increased efficiency — and to reduce training time and cost.

Uniquely effective solutions

Perhaps most importantly, StruMap can be configured via its own built-in scripting language to give you entirely bespoke applications. This way, you can evolve uniquely effective solutions for your own and your customers' business requirements.

Talk to us about it today.

Let's talk

With Northgate you get cost-effective innovation from public service experts. We help you increase efficiency and provide excellent service. Let's meet and discuss it.

Northgate Information Solutions UK Ltd
Peoplebuilding 2
Peoplebuilding Estate
Maylands Avenue
Hemel Hempstead
Hertfordshire
HP2 4NW

T: +44 (0) 870 808 1234
E: marketing@northgate-is.com

About Northgate Public Services

Teamwork, transformation, results. These three words summarise what you get from Northgate. Most of all, results.

Northgate is a public sector and utilities specialist that operates within strategic client partnerships to make change work for you. We help you transform your business processes, streamline the customer experience and reduce overhead.

Northgate clients achieve lower costs, less paperwork, better performance and more joined-up working. Northgate partners over 95% of UK local authorities and every UK police force.

Our technology manages over 40% of the country's social care records, processes over £12 billion of revenues and benefits, drives the electoral administration systems for 18 million people, manages over three million local authority and housing association properties worldwide, supports the national system for reporting police performance and enables real-time monitoring of Britain's roads.

www.northgate-is.com/publicservices